

Assignment of the Tibial Muscular Dystrophy Locus to Chromosome 2q31

Henna Haravuori,¹ Päivi Mäkelä-Bengs,¹ Bjarne Udd,³ Juhani Partanen,⁴ Leena Pulkkinen,⁴ Hannu Somer,² and Leena Peltonen¹

¹Department of Human Molecular Genetics, Institute of Biomedicine, University of Helsinki and National Public Health Institute, and

²Department of Neurology, Helsinki University Central Hospital, Helsinki; ³Department of Neurology, Vaasa Central Hospital, Vaasa, Finland; and ⁴Department of Clinical Neurophysiology and DNA/Chromosome Laboratory, Kuopio University Hospital, Kuopio, Finland

Summary

Tibial muscular dystrophy (TMD) is a rare autosomal dominant distal myopathy with late adult onset. The phenotype is relatively mild: muscle weakness manifests in the patient's early 40s and remains confined to the tibial anterior muscles. Histopathological changes in muscle are compatible with muscular dystrophy, with the exception that rimmed vacuoles are a rather common finding. We performed a genomewide scan, with 279 highly polymorphic Cooperative Human Linkage Center microsatellite markers, on 11 affected individuals of one Finnish TMD family. The only evidence for linkage emerged from markers in a 43-cM region on chromosome 2q. In further linkage analyses, which included three other Finnish TMD families and which used a denser set of markers, a maximum two-point LOD score of 10.14 (recombination fraction of .05) was obtained with marker D2S364. Multipoint likelihood calculations, combined with the haplotype and recombination analyses, restricted the TMD locus to an ~1-cM critical chromosomal region without any evidence of heterogeneity. Since all the affecteds share one core haplotype, the dominance of one ancestor mutation is obvious in the Finnish TMD families. The disease locus that was found represents a novel muscular dystrophy locus, providing evidence for the involvement of one additional gene in the distal myopathy group of muscle disorders.

Introduction

Distal myopathies represent a group of relatively rare inherited muscle diseases with unknown etiology and

without any identified gene defect, to date. One representative of this group is tibial muscular dystrophy (TMD; MIM 600334), in which the muscle weakness manifests in the patient's early 40s and, to a large extent, remains confined to the tibial anterior muscles, leading to a mild foot drop 10–15 years after the onset of muscle weakness. The overall disability is mild, and patients remain ambulatory throughout their lives (Udd et al. 1991*b*). The morphological findings are compatible with muscular dystrophy, as anterior tibial muscles are wasted and replaced by adipose and connective tissue (Udd et al. 1992). Rimmed vacuoles are frequently detected in the muscle biopsy (Udd et al. 1993). TMD was originally described in a large Finnish pedigree from an internal isolate (Udd et al. 1991*a*). Interestingly, in this pedigree with a high degree of remote consanguinity, six family members had a more severe, limb-girdle muscular dystrophy (LGMD). Their clinical features included a progress rate resembling childhood/juvenile-onset LGMD (Udd et al. 1991*a*).

Additional families with only the classic TMD phenotype have been found subsequently in Finland (Udd et al. 1993; Partanen et al. 1994). The estimated disease prevalence is $\geq 5/100,000$ (B. Udd, unpublished data). Thus far, TMD has been detected only in Finland, suggesting that it is a new member of the Finnish disease heritage, enrichment of which is due to isolation (Norio 1981; Peltonen et al. 1995).

In some distal myopathies, the locus assignment has been established. Miyoshi myopathy, in which the plantar flexors are initially affected, has been localized to 2p12-14 (Bejaoui et al. 1995). For Nonaka myopathy (in which the anterior tibialis muscles are initially affected) and for hereditary inclusion body myopathy, the loci have been assigned to chromosome 9p1-q1 (Argov et al. 1997; Ikeuchi et al. 1997), and, finally, one autosomal dominant form of distal myopathy has been mapped to chromosome 14 (Laing et al. 1995). The LGMDs are also a genetically heterogeneous group of muscle diseases. Two dominant forms and seven recessive forms have been mapped, thus far, and five defective genes have been identified in the recessive forms (table 1).

Received August 11, 1997; accepted for publication December 19, 1997; electronically published February 27, 1998.

Address for correspondence and reprints: Dr. Leena Peltonen, National Public Health Institute, Department of Human Molecular Genetics, Mannerheimintie 166, FIN-00300 Helsinki, Finland. E-mail: Leena.Peltonen@ktl.fi

© 1998 by The American Society of Human Genetics. All rights reserved. 0002-9297/98/6203-0015\$02.00

Table 1

LGMD Loci and Identified Genes

LGMD Locus	Inheritance ^a	Chromosomal Localization	Gene ^b	Symbol
1A	AD	5q31-33
1B	AD	1q11-21
2A	AR	15q15	Calpain3	CAPN3
2B	AR	2p12-13
2C	AR	13q12	γ-SG	SGCG
2D	AR	17q12-21	α-SG	SGCA
2E	AR	4q12	β-SG	SGCB
2F	AR	5q33	δ-SG	SGCD
2G	AR	17q11-12

NOTE.—Data from the studies by Beckmann et al. (1991); Ben Othmane et al. (1992); Azibi et al. (1993); Bashir et al. (1994); Roberds et al. (1994); Yamaoka et al. (1994); Lim et al. (1995); Noguchi et al. (1995); Richard et al. (1995); Nigro et al. (1996); Passos-Bueno et al. (1996); Moreira et al. (1997); and van der Kooi et al. (1997).

^a AD = autosomal dominant; AR = autosomal recessive.

^b SG = sarcoglycan.

In this article, we present results from a genomewide scan of one large Finnish TMD family and assign the TMD locus to a restricted region on chromosome 2q31 (fig. 1). We also provide initial evidence that, in one inbred family, a more severe, LGMD-type disease is associated with homozygosity of the same disease haplotype.

Subjects, Material, and Methods

Methods used for clinical examination, as well as the diagnostic criteria, have been described elsewhere (Udd et al. 1993). The features of the TMD and LGMD phenotypes are summarized in table 2. The genome scan was performed for 11 affected and 6 healthy individuals from family A (fig. 2). Family B (fig. 3) represents a part of the large inbred pedigree in which TMD was originally described (Udd et al. 1991a). The other two families (C and D, not shown), with four affected individuals in each, are not known to be related to either family A or family B.

DNA for genotyping was extracted from whole-blood samples from consenting individuals (as described in the study by Vandenplas et al. [1984], with modifications for the use of Phase Lock Gel). The study protocol was accepted by the Ethical Board of the University of Helsinki.

The genome scan was performed, by use of the ABI prism system and Genotyper 2.0 software (Perkin-Elmer, Applied Biosystems), with 279 highly polymorphic fluorescent microsatellite markers of Cooperative Human Linkage Center set 6A, which is an improvement of set 5 (Dubovsky et al. 1995). Additional loci were typed by

use of γ-[³²P]ATP-labeled markers from the Génethon map (update March 1996). The order of the markers has been obtained mostly from the physical YAC contig map of chromosome 2 (Chumakov et al. 1995), supplemented by the Génethon map. The approximate genetic distances are according to the Génethon map (fig. 1). PCR reactions, electrophoresis, and genotyping were performed with minor modifications to procedures described elsewhere (Aaltonen et al. 1993).

Two-point LOD-score calculations were performed by use of the MLINK option of the LINKAGE package of programs (Lathrop and Lalouel 1984; Cottingham et al. 1993; Schäffer et al. 1994). The SLINK option was utilized to estimate the informativeness of the family material used in the linkage analyses (Ott 1989; Weeks et al. 1990). The VITESSE algorithm was used for multi-point likelihood calculations (O’Connell and Weeks 1995), for which family B had to be subdivided, owing to multiple founders in the family. Autosomal dominant inheritance with complete penetrance was assumed, and the gene frequency was set to .0001; young subjects (<35 years of age) were scored as unknown in the linkage analyses, owing to the late onset of the disease. The patients with the LGMD phenotype were considered as

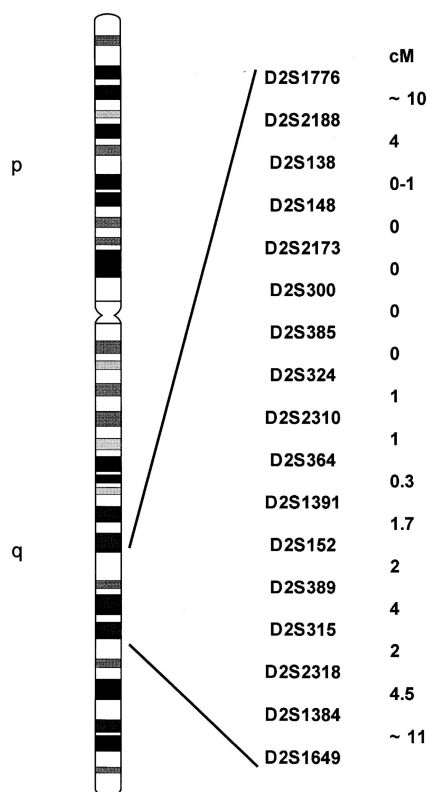


Figure 1 Order of markers and approximate intermarker distances on chromosome 2q31.

Table 2
Comparison of the TMD and LGMD Phenotypes

	TMD Phenotype	LGMD Phenotype
Clinical findings	Weakness in tibial anterior muscles (ankle dorsiflexion affected); patients unable to walk on their heels	Weakness in all proximal muscles; distal muscles less severely affected; facial muscles unaffected
Age at onset	4th–8th decade	1st–3d decade
Progression	Slow progress in anterior compartment muscles; mild proximal leg-muscle weakness in a minority of patients	Loss of ambulation between 3d and 6th decade
Findings from muscle biopsy ^a	Varies from mild myopathic changes to severe muscular dystrophy; rimmed vacuoles may be present	Severe muscular dystrophy in proximal muscles; mild changes in distal muscles
Findings from computed tomography/magnetic resonance imaging	Fatty degeneration of anterior tibial muscles; patchy lesions in asymptomatic muscles	Fatty replacement and atrophy in proximal muscles

^a Histopathological changes are variable, depending on the stage of the disease process. All patients in the LGMD group underwent muscle biopsy at a relatively late stage of the disease.

affected in the linkage analyses (fig. 3). The allele frequencies of the markers were obtained from the healthy chromosomes ($n = 20$). Male and female recombination fractions (θ) were assumed to be equal.

Results

Family A was utilized in the initial genomewide scan for the TMD locus, since, in the simulation analysis, this family alone was predicted to provide significant evidence for linkage, with an expected average LOD score of 4.34. The primary genomewide scan, using 279 markers, revealed only one interesting area, with a maximum two-point LOD score >3 in the pairwise analyses. Positive LOD scores were observed with markers D2S1776, D2S1391, D2S1384, and D2S1649, which span a 43-cM region (fig. 1). The maximum two-point LOD score of 6.31 was obtained with marker D2S364 ($\theta = .00$). When three additional TMD families were analyzed with the markers for this region, significant LOD scores of 3.12 ($\theta = .00$) and 3.47 ($\theta = .00$) were obtained in family B, with markers D2S364 and D2S385, respectively. Families C and D did not provide significant evidence for linkage to any of the markers in the pairwise analyses. However, when information from all four families was combined, the evidence for linkage increased. The maximum two-point LOD score of 10.14 ($\theta = .05$) was obtained with marker D2S364, in the pooled data set, and no evidence for genetic heterogeneity emerged from the statistical analyses.

Multipoint likelihood calculations assigned the TMD locus to be within close proximity of marker D2S324, which gave a maximum multipoint LOD score of 10.05

($\theta = .00$) (fig. 4). Haplotype analysis was performed on the basis of the haplotypes formed when a minimum number of recombination events was allowed (figs. 2 and 3). In families A, B, and D the analysis revealed a common core haplotype, since all affected individuals shared identical alleles on markers D2S138, D2S148, D2S2173, D2S300, D2S385, D2S324, D2S2310, and D2S364. Family C shared this haplotype identity with markers D2S138, D2S148, D2S2173, D2S300, D2S385, and D2S324, suggesting one restricted core haplotype in all the families analyzed. Furthermore, one healthy individual in family B shared the chromosomal haplotype of TMD, up to marker D2S148. This set the proximal boundary for the TMD region (fig. 3). The core haplotype and the recombinations thus restrict the critical area to an ~ 1 -cM region between markers D2S148 and D2S2310.

Six patients in family B had a more severe, LGMD-type of disease. Three individuals, with childhood onset of LGMD and loss of ambulation already in the 3d decade, were homozygous for the disease allele (fig. 3). Although the other three individuals had LGMD, onset of the disease had been in adolescence, and they had lost ambulation in the 6th decade. They shared only one TMD chromosome, like that found in the TMD-affected members of the family (data not shown).

Discussion

Our findings provide evidence for a novel muscular dystrophy locus, via the assignment of the TMD locus to chromosome 2q31, between markers D2S148 and D2S2310. The number of disease chromosomes in our

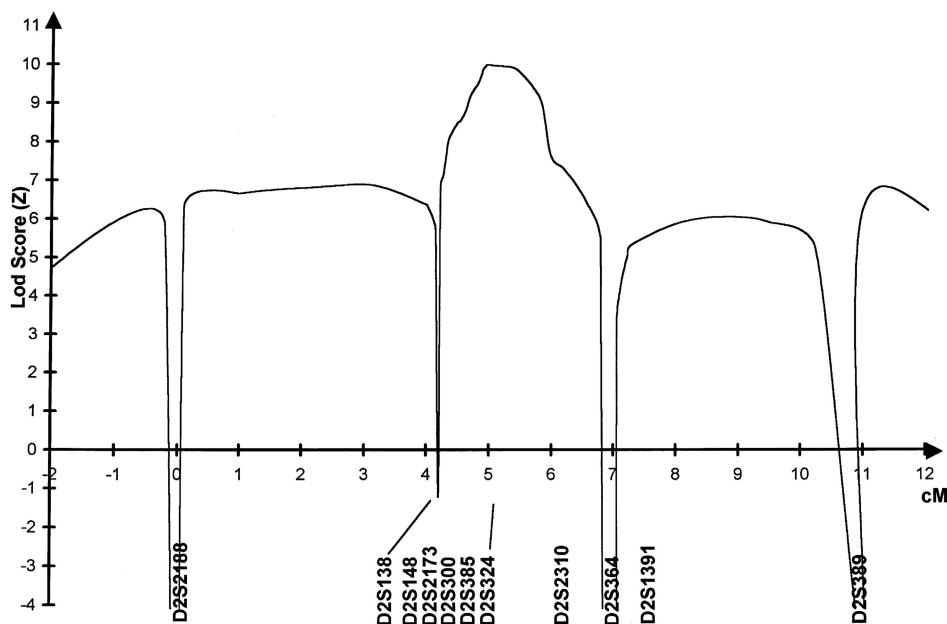


Figure 4 Multipoint linkage analysis of the TMD locus, against a fixed set of markers. The markers used are shown below the horizontal axis. The intermarker distances and the order between the markers indicated as a cluster are not well established. The order indicated here is most compatible with the haplotypes analyzed. Distances are indicated in centimorgans (cM).

more severe, LGMD phenotype together with the milder TMD phenotype is not a unique event in families with muscular dystrophy. Two families have been described with a distal myopathy and LGMD phenotypes, which segregate in an autosomal recessive fashion. Linkage analyses of these families revealed a chromosome 2p locus that harbors both the autosomal recessive LGMD locus (LGMD2B) and the Miyoshi myopathy locus. It was suggested that the different disease phenotypes resulted from the same disease-causing mutation but that the phenotype was additionally influenced by other genetic or environmental factors (Illarioshkin et al. 1996; Weiler et al. 1996). In family B, the two phenotypes also are linked to the same locus, and the most severe LGMD phenotype seems to be associated with homozygosity of the disease allele. This could be caused by inbreeding, and the LGMD phenotype could result from the presence of another recessive muscular dystrophy locus cosegregating in the family. Alternatively, a secondary gene may directly influence disease severity, as was described recently for a mouse model of cystic fibrosis (Rozmahel et al. 1996).

Our findings provide the basis for further attempts to identify the TMD gene. The relatively well restricted critical chromosomal region on 2q31 contains good candidate genes, including a gene for titin, a giant structural protein of muscle (Labeit and Kolmerer 1995). In ad-

dition, two genes encoding collagen chains (COL3A1 and COL5A2), expressed in the endo- and perimysium of the muscle, were initially assigned to 2q32 (Collins et al. 1996). The titin is claimed to contribute to the myofibrillar assembly and elasticity of striated muscle (Labeit and Kolmerer 1995). Furthermore, titin is composed of slightly different domains in different types of skeletal and heart muscle, owing to alternative splicing (Labeit and Kolmerer 1995; Kolmerer et al. 1996; Sorimachi et al. 1997). The tissue-specific expression of the differentially spliced titin transcripts could explain the selective muscular affection pattern of TMD. Consequently, the titin gene could be an excellent candidate gene for TMD.

Our further studies are focused on the structural analyses of this gigantic (100-kb cDNA) gene, as well as on other candidate genes in the critical chromosomal region. Also, novel positional candidate genes will be identified via the construction of the complete transcript map. These efforts eventually should result in the characterization of the gene defect causing TMD.

Acknowledgments

We are grateful for the dedicated cooperation of the TMD families participating in this study. Ms. Maikki Parkkonen provided excellent technical assistance. By providing practical

advice and help, various people participated, in numerous ways, in this mapping project, including Drs. P. Nokelainen, J. Kaukonen, P. Pekkarinen, and I. Hovatta and Mr. K. Trontti. Drs. I. Rautakorpi, K. Borg, V. Myllylä, and A. Pilke also helped us. Grants from the Academy of Finland, the Hjelt Fond of the Pediatric Research Foundation, and the Finska Läkaresällskapet r.f. are acknowledged.

References

- Aaltonen J, Komulainen J, Vikman A, Palotie A, Wadelius C, Perheentupa J, Peltonen L (1993) Autoimmune polyglandular disease type I: exclusion map using amplifiable multiallelic markers in a microtiter well format. *Eur J Hum Genet* 1:164–171
- Argov Z, Tiram E, Eisenberg I, Sadeh M, Seidman CE, Seidman JG, Karpati G, et al (1997) Various types of hereditary inclusion body myopathies map to chromosome 9p1-q1. *Ann Neurol* 41:548–551
- Azibi K, Bachner L, Beckmann JS, Matsumura K, Hamouda E, Chaouch M, Chaouch A (1993) Severe childhood autosomal recessive muscular dystrophy with the deficiency of the 50 kDa dystrophin associated glycoprotein maps to chromosome 13q12. *Hum Mol Genet* 2:1423–1428
- Bashir R, Strachan T, Keers S, Stephenson A, Mahjneh I, Marconi G, Nashef L, et al (1994) A gene for autosomal recessive limb-girdle muscular dystrophy maps to chromosome 2p. *Hum Mol Genet* 3:455–457
- Beckmann JS, Richard I, Hillaire D, Broux O, Antignac C, Bois E, Cann H, et al (1991) A gene for limb-girdle muscular dystrophy maps to chromosome 15 by linkage. *C R Acad Sci III* 312:141–148
- Bejaoui K, Hirabayashi K, Hentati F, Haines JL, Ben Hamida C, Belas S, Miller RG, et al (1995) Linkage of Miyoshi myopathy (distal autosomal recessive muscular dystrophy) locus to chromosome 2p12-14. *Neurology* 45:768–777
- Ben Othmane K, Ben Hamida M, Pericak-Vance MA, Ben Hamida C, Blel S, Carter SC, Bowcock AM, et al (1992) Linkage of Tunisian autosomal recessive Duchenne-like muscular dystrophy to the pericentromeric region of chromosome 13q. *Nat Genet* 2:315–317
- Chumakov IM, Rigault P, Le Gall I, Bellanné-Chantelot C, Billaut A, Guillou S, Soularue P, et al (1995) A YAC contig map of the human genome. *Nature Suppl* 377:175–297
- Collins A, Frezal J, Teague J, Morton NE (1996) A metric map of humans: 23,500 loci in 850 bands. *Proc Natl Acad Sci USA* 93:14771–14775
- Cottingham RW Jr, Idury RM, Schäffer AA (1993) Faster sequential genetic linkage computations. *Am J Hum Genet* 53:252–263
- Dubovsky J, Sheffield VC, Duyk GM, Weber JL (1995) Sets of short tandem repeat polymorphisms for efficient linkage screening of the human genome. *Hum Mol Genet* 4:449–452
- Ikeuchi T, Asaka T, Saito M, Tanaka H, Higuchi S, Tanaka K, Saida K, et al (1997) Gene locus for autosomal recessive distal myopathy with rimmed vacuoles maps to chromosome 9. *Ann Neurol* 41:432–437
- Illarioshkin SN, Ivanova-Smolenskaya IA, Tanaka H, Verezhagin NV, Markova ED, Polshuk VV, Lozhnikova SM, et al (1996) Clinical and molecular analysis of a large family with three distinct phenotypes of progressive muscular dystrophy. *Brain* 119:1895–1909
- Kolmerer B, Olivieri N, Witt CC, Herrmann BG, Labeit S (1996) Genomic organization of M line titin and its tissue-specific expression in two distinct isoforms. *J Mol Biol* 256:556–563
- Labeit S, Kolmerer B (1995) Titins: giant proteins in charge of muscle ultrastructure and elasticity. *Science* 270:293–296
- Laing NG, Laing BA, Meredith C, Wilton SD, Robbins P, Honeyman K, Dorosz S, et al (1995) Autosomal dominant distal myopathy: linkage to chromosome 14. *Am J Hum Genet* 56:422–427
- Lathrop GM, Lalouel JM (1984) Easy calculations of lod scores and genetic risks on small computers. *Am J Hum Genet* 36:460–465
- Lim LE, Duclos F, Broux O, Bourg N, Sunada Y, Allamand V, Meyer J, et al (1995) β -sarcoglycan: characterization and role in limb-girdle muscular dystrophy linked to 4q12. *Nat Genet* 11:257–265
- Moreira ES, Vainzof M, Marie SK, Sertié AL, Zatz M, Passos-Bueno MR (1997) The seventh form of autosomal recessive limb-girdle muscular dystrophy is mapped to 17q11-12. *Am J Hum Genet* 61:151–159
- Nigro V, de Sá Moreira E, Piluso G, Vainzof M, Belsito A, Politano L, Puch AA, et al (1996) Autosomal recessive limb-girdle muscular dystrophy, LGMD2F, is caused by a mutation in the δ -sarcoglycan gene. *Nat Genet* 14:195–198
- Noguchi S, McNally E, Ben Othmane K, Hagiwara Y, Mizuno Y, Yoshida M, Yamamoto H, et al (1995) Mutations in the dystrophin-associated protein γ -sarcoglycan in chromosome 13 muscular dystrophy. *Science* 270:819–822
- Norio R (1981) Diseases of Finland and Scandinavia. In: Rothschild HR (ed) *Biocultural aspects of diseases*. Academic Press, New York, pp 359–415
- O'Connell JR, Weeks DE (1995) The VITESSE algorithm for rapid exact multilocus linkage analysis via genotype set-recoding and fuzzy inheritance. *Nat Genet* 11:402–408
- Ott J (1989) Computer-simulation methods in human linkage analysis. *Proc Natl Acad Sci USA* 86:4175–4178
- Partanen J, Laulumaa V, Paljärvi L, Partanen K, Naukkarinen A (1994) Late onset foot-drop muscular dystrophy with rimmed vacuoles. *J Neurol Sci* 125:158–167
- Passos-Bueno MR, Moreira ES, Vainzof M, Marie SK, Zatz M (1996) Linkage analysis in autosomal recessive limb-girdle muscular dystrophy (AR LGMD) maps a sixth form to 5q33-34 (LGMD2F) and indicates that there is at least one more subtype of AR LGMD. *Hum Mol Genet* 5:815–820
- Peltonen L, Pekkarinen P, Aaltonen J (1995) Messages from an isolate: lessons from the Finnish gene pool. *Biol Chem Hoppe-Seyler* 376:697–704
- Richard I, Broux O, Allamand V, Fougereousse F, Chiannilkulchai N, Bourg N, Brenguier L, et al (1995) Mutations in the proteolytic enzyme calpain 3 cause limb-girdle muscular dystrophy type 2A. *Cell* 81:27–40
- Roberds SL, Leturq F, Allamand V, Piccolo I, Jeanpierre M, Anderson RD, Lim LE, et al (1994) Missense mutations in the adhalin gene linked to autosomal recessive muscular dystrophy. *Cell* 78:625–633

- Rozmahel R, Wilschanski M, Matin A, Plyte S, Oliver M, Auerbach W, Moore A, et al (1996) Modulation of disease severity in cystic fibrosis transmembrane conductance regulator deficient mice by a secondary genetic factor. *Nat Genet* 12:280-287
- Schäffer AA, Gupta SK, Shriram K, Cottingham RW Jr (1994) Avoiding recomputation in linkage analysis. *Hum Hered* 44:225-237
- Sorimachi H, Freiburg A, Kolmerer B, Ishiura S, Stier G, Gregorio CC, Labeit D, et al (1997) Tissue-specific expression and α -actinin binding properties of the Z-disc titin: implications for the nature of vertebrate Z-discs. *J Mol Biol* 270:688-695
- Udd B, Kääriäinen H, Somer H (1991a) Muscular dystrophy with separate phenotypes in a large family. *Muscle Nerve* 14:1050-1058
- Udd B, Lamminen A, Somer H (1991b) Imaging methods reveal unexpected patchy lesions in late onset distal myopathy. *Neuromuscul Disord* 4:279-285
- Udd B, Partanen J, Halonen P, Falck B, Hakamies L, Heikkilä H, Ingo S, et al (1993) Tibial muscular dystrophy: late adult onset distal myopathy in 66 Finnish patients. *Arch Neurol* 6:604-608
- Udd B, Rapola J, Nokelainen P, Arikawa E, Somer H (1992) Nonvacuolar myopathy in a large family with both late adult onset distal myopathy and severe proximal muscular dystrophy. *J Neurol Sci* 2:214-221
- van der Kooij AJ, van Meegen M, Ledderhof TM, McNally EM, de Visser M, Bolhuis PA (1997) Genetic localization of a newly recognized autosomal dominant limb-girdle muscular dystrophy with cardiac involvement (LGMD1B) to chromosome 1q11-21. *Am J Hum Genet* 60:891-895
- Vandenplas S, Wiid I, Grobler-Rabie A, Brebner K, Ricketts M, Wallis G, Bester A, et al (1984) Blot hybridization analysis of genomic DNA. *J Med Genet* 21:164-172
- Weeks DE, Ott J, Lathrop GM (1990) SLINK: a general simulation program for linkage analysis. *Am J Hum Genet Suppl* 47:A204
- Weiler T, Greenberg CR, Nylén E, Halliday W, Morgan K, Eggertson D, Wrogemann K (1996) Limb-girdle muscular dystrophy and Miyoshi myopathy in an aboriginal Canadian kindred map to *LGMD2B* and segregate with the same haplotype. *Am J Hum Genet* 59:872-878
- Yamaoka LH, Westbrook CA, Speer MC, Gilchrist JM, Jabs EW, Schweins EG, Stajich JM, et al (1994) Development of microsatellite genetic map spanning 5q31-q33 and subsequent placement of the LGMD 1A locus between D5S178 and IL9. *Neuromuscul Disord* 4:471-475